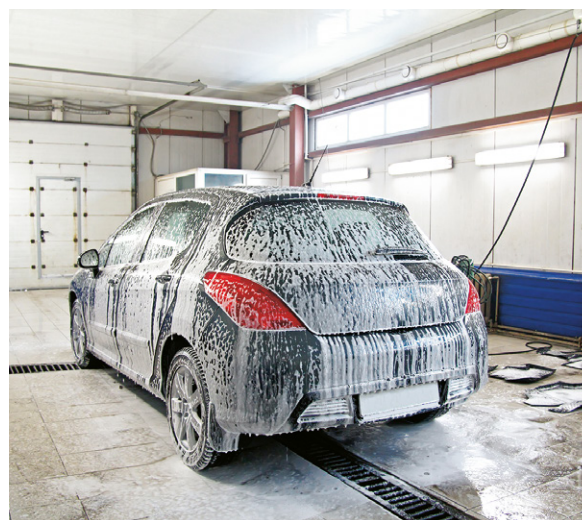


# Active Shampoo 3000



Alkaline multi-purpose shampoo - concentrate.



## Properties:

- Excellent cleaning performance on dry surfaces without pre-cleaning
- Forms a rich "wet" active foam
- Great adhesion on vertical surfaces
- Does not damage chrome parts and polycarbonates
- Leaves a clean surface

## Advantages:

- Leaves high gloss on the car paint
- Dissolves greasy impurities from diesel engines
- Very gentle on car paints
- Biodegradable

## Applications:

**ACTIVE SHAMPOO 3000** is a highly concentrated alkaline multi-purpose shampoo for both contact and contactless washing of cars, trucks, agriculture and construction machinery, trains, buses etc. When applied, it forms a rich, wet foam with perfect adhesion even on vertical surfaces. Excellently dissolves greasy impurities from diesel engines.

## Order codes:

Name	Storage code	Package	Volume / Size	Order number
Active Shampoo 3000 - 5 L	AS	Can	5 litres	1 34157
Active Shampoo 3000 - 20 L	AS3	Can	20 litres	1 34158
Active Shampoo 3000 - 250 ml Mix1.5	AS0	Bottle	250 ml	1 34155

### Instructions for use:

- **Hand washing:**  
Dilute the concentrate 1:100 with water and wash the car normally using a sponge or brush. Rinse well with a lot of water afterwards
- **Contactless washing using a high-pressure hand washer and RETECH SNOW FOAM LANCE:**  
Dilute the concentrate 1:1 to 1:5 according to the level of soiling and apply a thick wet foam using **RETECH SNOW FOAM LANCE**. To achieve perfect results apply the foam in stripes from the bottom up with a 1/3 overlap of the individual foam layers. Leave for 2 minutes and rinse well with clean water using a high-pressure hand washer. First rinse in full stripes from the bottom up and afterwards from top to bottom for the final rinse.  
**Note:** Hot water boosts the washing effect.
- **Automatic and self-service car washes:**  
Dilute according to the dosing pump instructions

Active shampoo consumption is directly proportional to the selected application method and level of soiling.

Do not use on surfaces warmer than 50 °C!

**ONLY FOR PROFESSIONAL AND INDUSTRIAL USE!**

### Technical data:

Colour:	dark blue
pH 100%:	13 ± 1
pH 10%:	12.5 ± 1
Biodegradability:	> 90 %
Package:	20 l
Density:	1.03 kg / litre ± 1 %

### Dosage / dilution:

Contact hand washing	1:100
Contactless washing using a high-pressure hand washer and <b>RETECH SNOW FOAM LANCE</b>	1:1 – 1:5
Automatic and self-service car washes	according to the instructions

### Storage:

Store at a temperature between 0 °C and 35 °C.  
Store in a dark place in a sealed container.

### Health and Safety:

Please read our Material Safety Data Sheet.

### Declaration:

The information and recommendations in this publication are to the best of our knowledge reliable. However nothing herein is to be construed as a warranty or representation. Users should make their own tests to determine the applicability of such information or the suitability of any products for their own particular purposes. Statements concerning the use of the products described herein are not to be construed as recommending the infringement of any patent and no liability for infringement arising out of any such use is to be assumed.

### Address:

**RETECH, s.r.o.**, Vackova 1541/4; Praha 5 - Stodůlky; Czech Republic  
**Contact address:** 285 02 Suchdol u Kutné Hory cp. 212; tel./fax: +420 327 596 128; e-mail: info@retech.cz